



Ripple Signal Generator

RSG 40C20

- ISO 21498-2-2021
- ISO/TS 7637-4-2020
- VW 80300-2021

— Features

- > 5.7-inch touch screen;
- > As per ISO/TS 7637-4-2020 pulse B requirements;
- > The integrated design makes the system more simple, safe and durable;
- > Ethernet, RJ45 interface for PC remote control and test report print;
- > The key components are all made of high-quality imported materials, with reliable quality, exquisite appearance and comfortable operation.

The RSG series ripple signal generator is according with ISO/TS 7637-4-2020, ISO 21498-2-2021 and VW 80300_EN_2021 standards, meeting the requirements of standard pulse B for transient conduction measurement of new energy vehicle-mounted electric drive and high-voltage parts. It adopts the third generation control platform design of our company and features intelligent control and convenience to use. Users can run tests through Autolab software by setting all parameters on it.

— Application Areas



Technical Parameters

Standard	ISO/TS 7637-4:2020、ISO 21498-2:2021、 VW 80300:2021
Frequency	10 Hz ~ 300 kHz
Frequency step	0.01 Hz
Open circuit output voltage	Max80 Vpp
Ripple Dwell Time	2s ~ 999 s, resolution 0.1 s
Generator overcurrent protection peak current	20A
Input/output ports	Banana head 4 mm
Power	MAX 800 W


General Parameters

Weight	Approximately 25 kg
Dimension	620*450*190mm (length x width x height)
Ambient Temperature	15 ° C -35 ° C
Relative Humidity	45% -75%
Atmospheric Pressure	86 kPa ~ 106 kPa
Working Power	AC 220 V (±10%) , 50 Hz

Standard Accessories

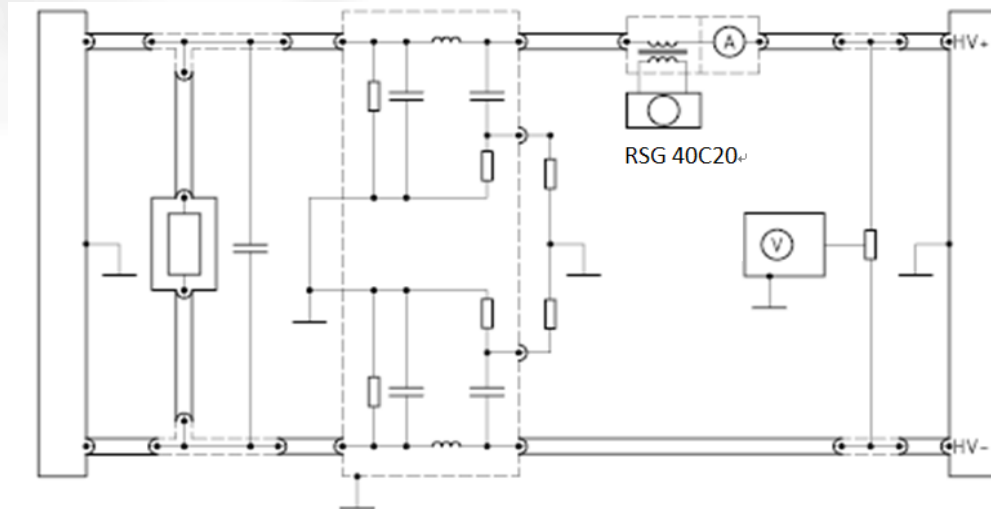
Test line, power cord, fuse, factory report, instruction manual.

Optional Accessories

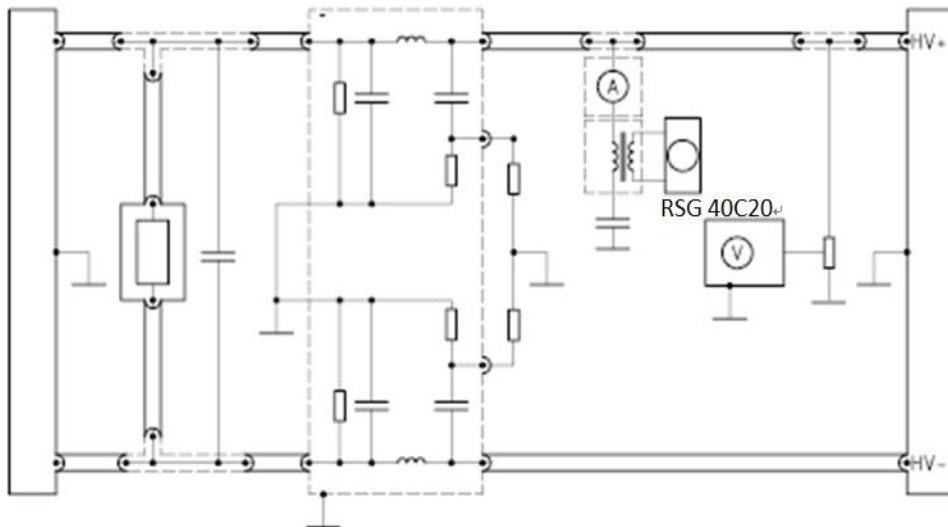
<p>Coupling transformer TPT-7637-4C100B</p> 	<p>Umax: 15 V@10 Hz≤f≤3 kHz 25 V@3 kHz≤f≤30 kHz 2.5 V@30 kHz≤f≤300 kHz Primary current:32 A Secondary current:100 A Frequency:10 Hz ~ 300 kHz Size:440*190*585 mm Weight:60 kg</p>
<p>Automotive Testing software Autolab</p>	<ul style="list-style-type: none"> > Compatible with Windows XP/7/8/10/11 OS; > Support of Ethernet interface; > Powerful test sequence function and one-key remote control; > Support of report export and user-defined test report template; > Emergency stop with one key makes operation safe;

Test Connection Diagram:

1 line-to-line



2 HV+ line-to-ground



SUZHOU3CTEST ELECTRONIC CO., LTD

Address: No. 99 E'meishan Road, SND, Suzhou, Jiangsu Province, China
Sales Email: globalsales@3ctest.cn Service Email: service@3ctest.cn
Tel: + 86 - 512 - 68077192 Web: www.3c-test.com



3ctest is always striving for product innovation and quality improvement.
Product appearance and technical specifications are subject to change without further notice.