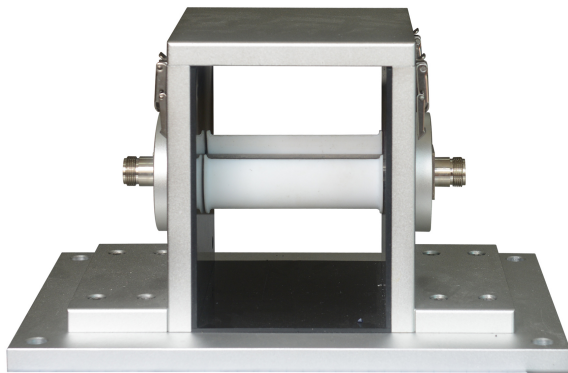


Current Injection Clamp Calibration Fixture BCICF-200

Datasheet



In Compliance with

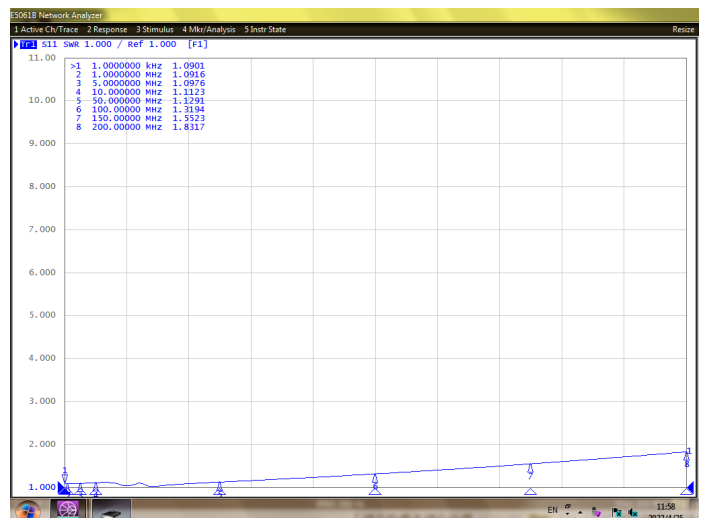
- >MIL-STD-461E/F/G
- >ISO 7637-3-2007/2011

Introduction

The BCICF-200 is a kind of wide-band transmission/coupling device used for the calibration of current injection/monitoring clamps, which has the characteristics of low voltage SWR and distortion-free waveform. It meets the requirements of MIL-STD-461E /F/G, ISO 7637-3:2007/2011 and could be widely used in EMC conductive susceptibility (immunity) test.

General Parameters

Frequency	DC ~200 MHz
Characteristic Impedance	50 Ω
Voltage Standing Wave Ratio	≤ 2
Internal Length	100 mm
Internal Width	127 mm
Internal Height	135 mm
Weight	4.4 kg



Voltage SWR Curve of BCICF-200



SUZHOU 3CTEST ELECTRONIC CO., LTD.

Add.: No. 99 E'meishan Road, SND, Suzhou, Jiangsu Province, China

Tel: +86 (0)512 6807 7192 Fax: +86-512-68079795

Sales Email: globalsales@3ctest.cn Service Email: service@3ctest.cn

www.3c-test.com

3ctest is always striving for product innovation and quality improvement.

Product appearance and technical specifications are subject to change without further notice.

© 3ctest